

A WARM WELCOME TO OUR SUMMER 2025

Quarterly Newsletter



Etive House
CARE HOME

Manager's Introduction

Summer is here, bringing plenty of sunshine, smiles, and special moments to share. In this issue, we'll take a look back at some of the fun we've had so far and share what's coming up. We hope this newsletter adds a little extra joy to your day.

If you know someone who would like to receive our email newsletters just let us know, or forward them the newsletter sign up link below:

[Newsletter Sign-Up](#)

Best wishes,

Georgina & Mhairi
Home Management

Upcoming Event

Saturday 23rd August

Soup Lunch - A warm welcome awaits...



All Proceeds Goes To Our Residents Comfort Fund

Summer Weather



Fresh Air & Sunshine

As the days grow warmer and the sun shines brighter, our residents have been soaking up the delightful weather in various ways.

George, one of our dedicated gardening residents, has been spending time in the garden tending to his potato plants. His green thumb and enthusiasm for gardening have not only helped nurture the plants but also created a serene environment in which others can enjoy nature.



Many residents have taken advantage of the sunny days, engaging in daily walks, assisting with garden chores, or simply sitting outside to relish the vibrant atmosphere. It's wonderful to see everyone engaging with the outdoors and making the most of this beautiful season!

Recent Activities



Tasty Treats

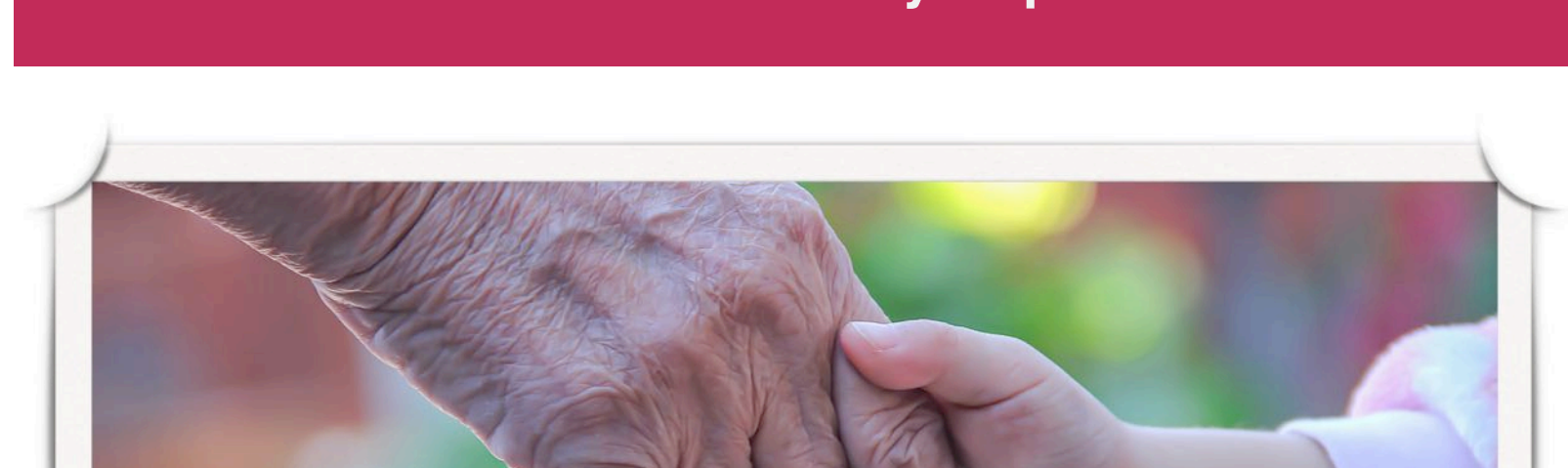
Recently, our residents and staff enjoyed the delightful Ice Cream Trolley that made its rounds through the care home. With a variety of flavours and toppings to choose from, everyone had the opportunity to indulge in some sweet treats.



Our regular activities continue to bring joy and engagement to our residents. Zumba sessions have been a highlight, providing a fun way to get moving while enjoying music. Additionally, visits from Honey, our friendly Pat-a-Dog, have offered comfort and smiles to our residents, reinforcing the therapeutic benefits of animal companionship. A mix of group and one-on-one activities are also organised, ensuring that every resident has the opportunity to participate in something they enjoy.

Our activities team is dedicated to creating enriching experiences for all.

Lochnell Primary Pupils



Intergenerational

Etive House experienced a joyful intergenerational visit as six enthusiastic pupils from Lochnell Primary School, along with two teachers, spent an afternoon with residents. The event began with a captivating story session where a resident read "The Snail and the Whale" by Julia Donaldson, sparking memories and engagement among residents. Following the story, the children performed their favourite rhymes, encouraging residents to join in the fun, which resulted in laughter and shared moments.



Get To Know Our Team

Get To Know Us...

To help everyone become more familiar with the faces that make up our wonderful team, we have photographed several of our staff members, complete with their roles within the home. We are proud of our dedicated team members and grateful for the exceptional care they provide every day.

Etive House
CARE HOME



LYNN



LAJOS



FATMA



RORY

Care Assistant Team

Our Head Chef



GRAHAM

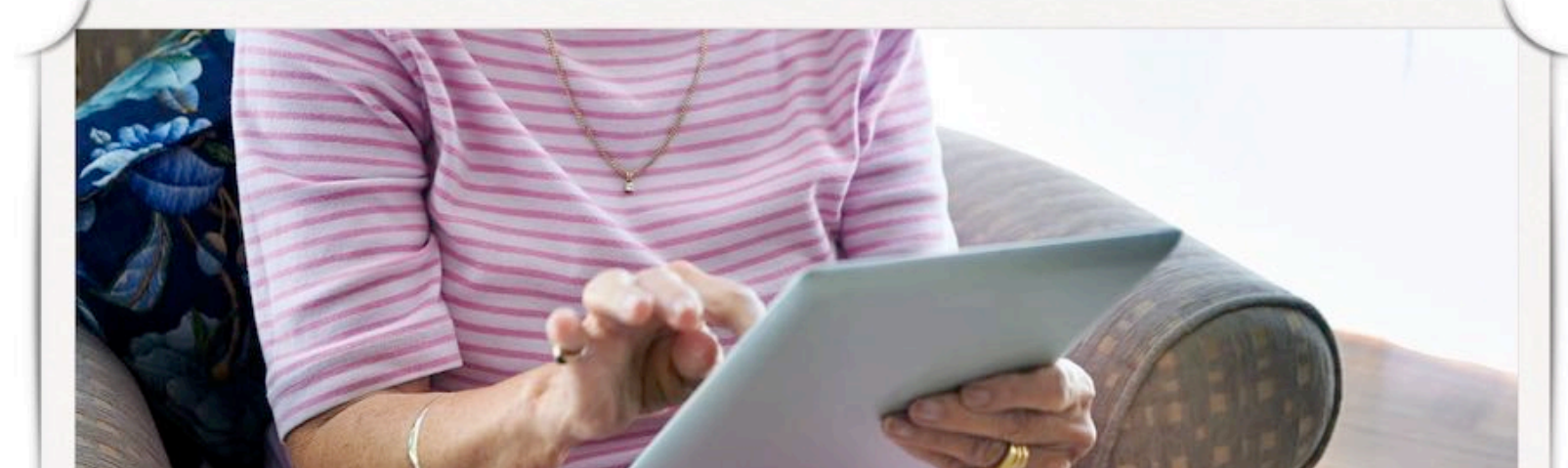
Housekeeping Team



LORNA & HOLLY

In other news, we are pleased to announce we have created a new Trainee Senior Care Assistant role in the home. This initiative allows us to train and develop both our existing staff and new team members, ensuring they have the skills and support needed to thrive in this important position.

Reviews & Feedback



Your Thoughts Matter

We would greatly appreciate all feedback, reviews or suggestions you may have. Please contact us directly or leave a review through the links below:

[Carehome.co.uk Reviews](#)

[Google Reviews](#)

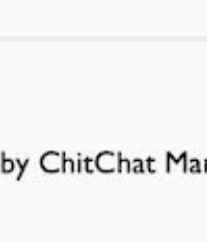
Keeping In Touch



FIND US ON
SOCIAL MEDIA!

Connect With Us

Make sure to check out our [Etive House Care Home Facebook Page](#) and give us a Like! We love to share photographs of what we have been up to recently on this platform.



Produced by ChicChat Marketing Ltd.

Copyright © 2025 Etive House Care Home, All rights reserved.

Want to change how you receive these emails?
You can [update your preferences](#) or [unsubscribe from this list](#).